

## 2021 Rising Visionary Recipient



### **Shervonne Poleon**

University of Alabama at Birmingham  
School of Optometry  
Vision Science Graduate Program  
Ph.D. Candidate



# Achieving Equity in Eye Health in a Diverse Population with Evolving Health Needs

**Shervonne Poleon**

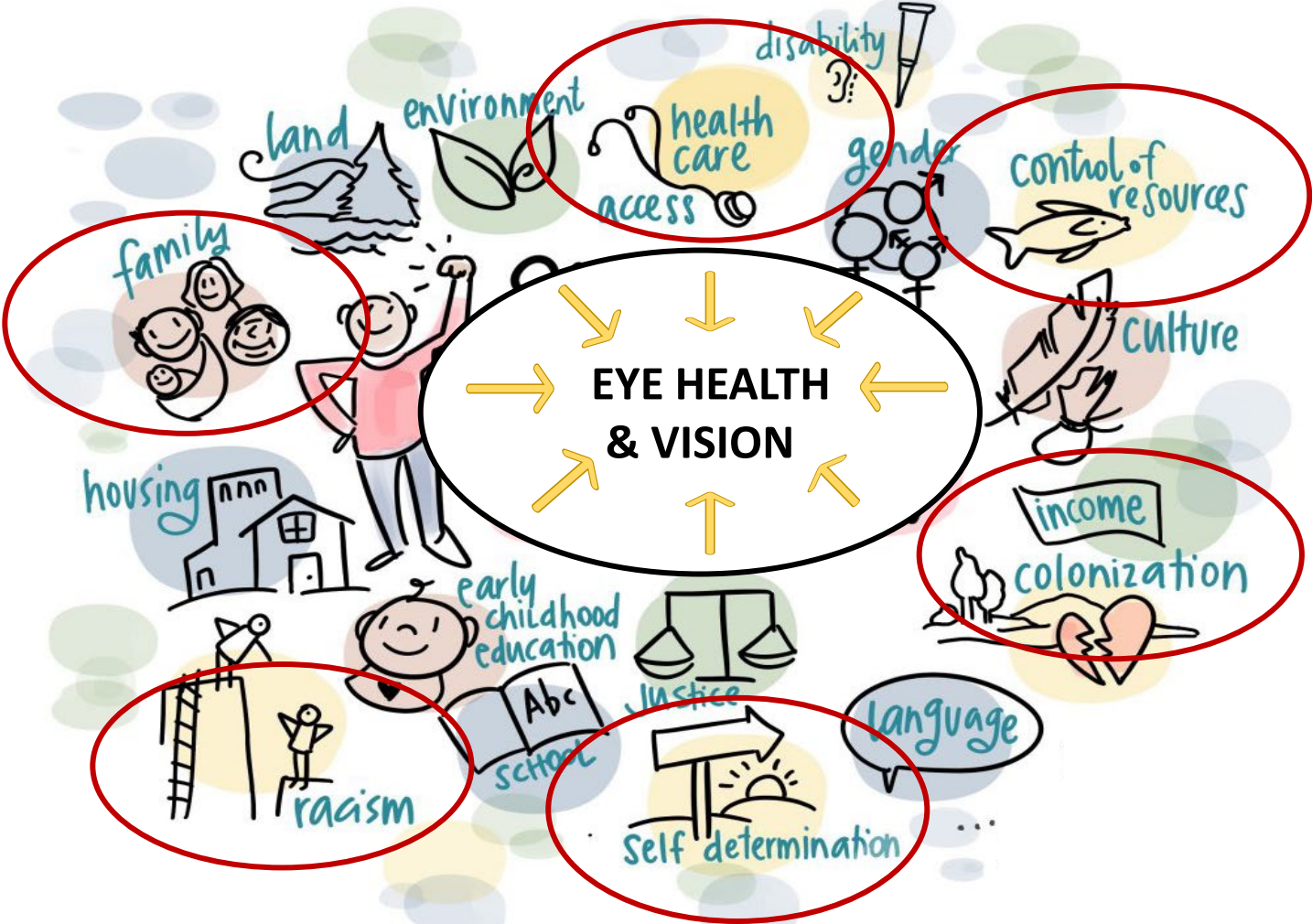
University of Alabama at Birmingham

School of Optometry

Ph.D. Candidate, Vision Science Graduate Program

July 14, 2021





## Sociobehavioral Barriers to Eye Care and Eye Health

- In glaucoma, psychological stress (Zhang et al., 2017), cultural differences (Rees et al., 2014), and lack of emotional support (Wang et al., 2019) are barriers to eye care and eye health.
- Despite their influence, many social and behavioral factors may not be adequately discussed during clinic visits (Sleath et al., 2014).
- The patient-provider relationship is a medium for effective communication and the basis for shared decision making (Addario et al., 2018).
- **Assess patient and provider perspectives on factors affecting glaucoma treatment**

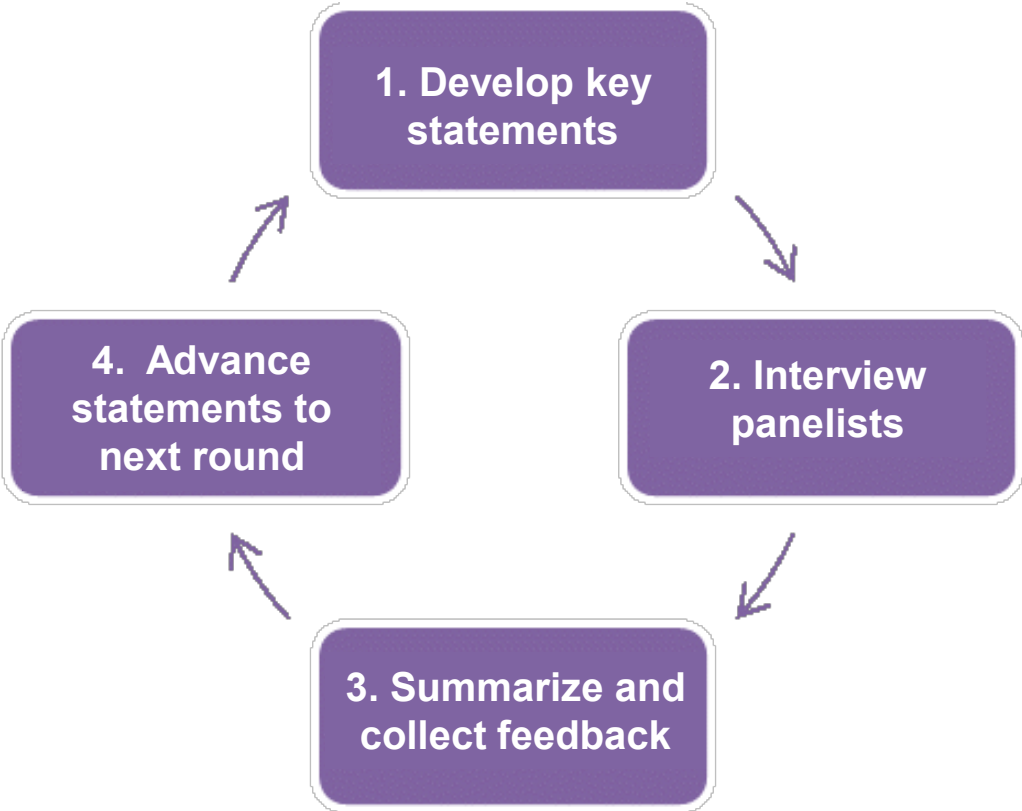
# Assess patient and provider perspectives on factors affecting glaucoma treatment

(Delphi survey method; RAND Corporation, 1959)

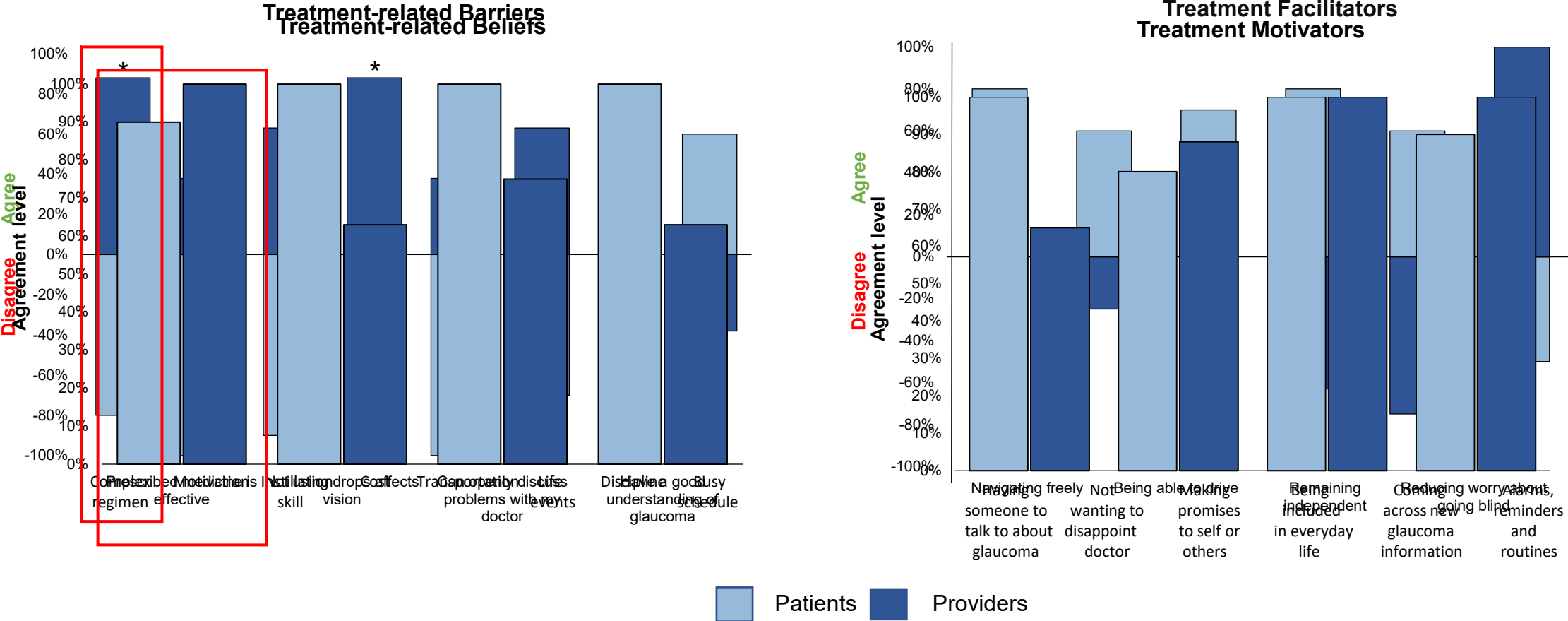


In Delphi surveys, a diverse panel of experts completes multiple rounds of questionnaires to reach consensus on a topic.

↓  
**Consensus is reached when 80% or more of panelists agree**



# Consensus Between Patients and Providers

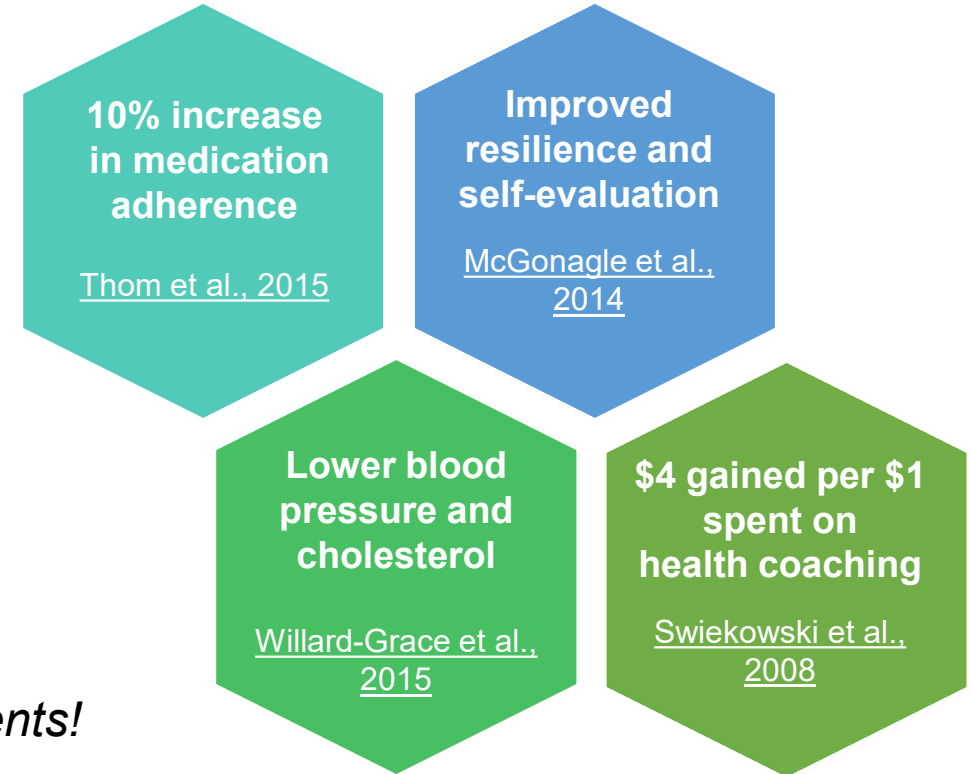


\* Significant at 0.05 level using Mann Whitney U test

Poleon et al., Optom Vis Sci, In Press, 2021

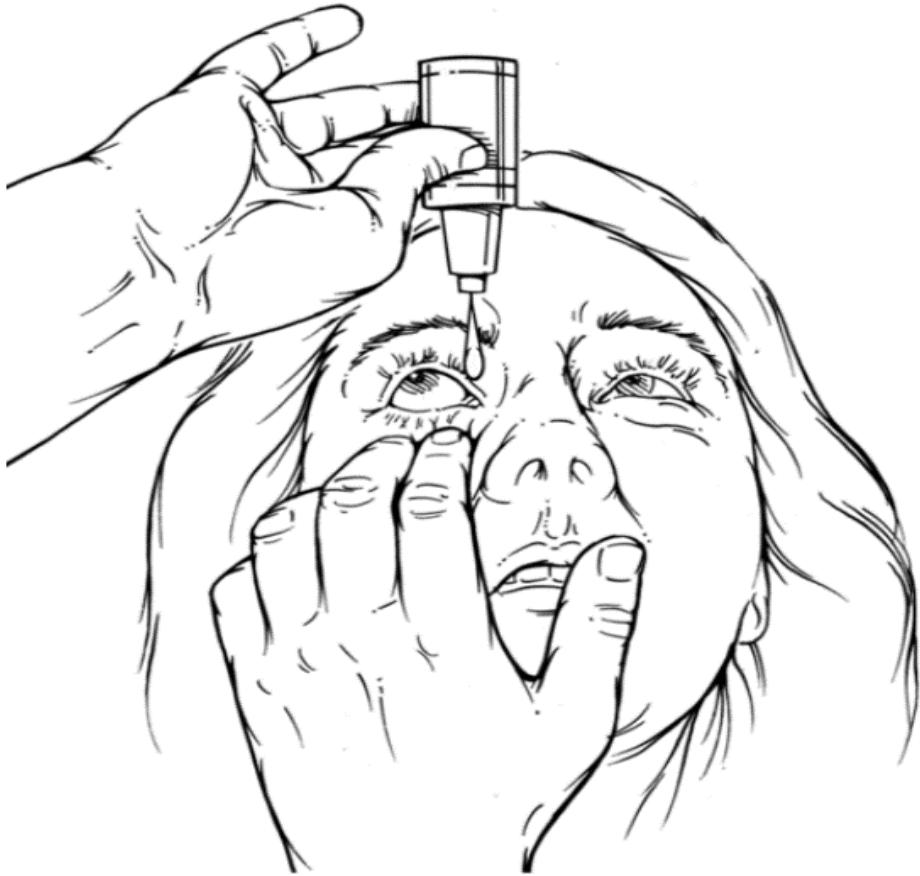
## Eye Care Facilitators Within the Clinic Space

- Trained in patient-centered clinical care:
  - Devote time to addressing individual patient needs
  - Provide health counseling and coaching interventions
  - Connect patients with clinic and community resources
  - Work synergistically with clinicians to improve patient engagement in eye care
- *Eye care facilitators may not be equally beneficial to all patients!*





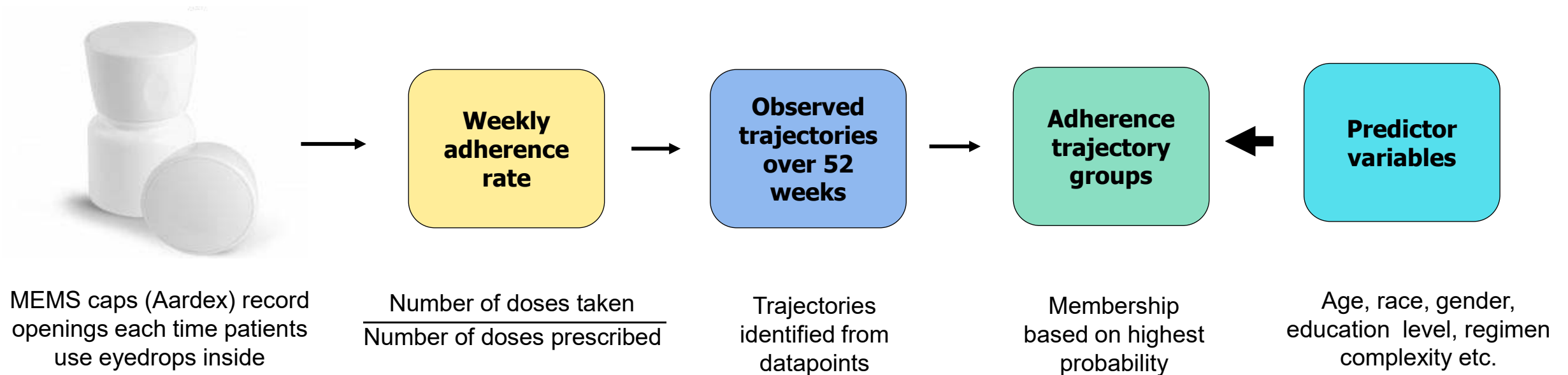
## Diversity in Health Behavior



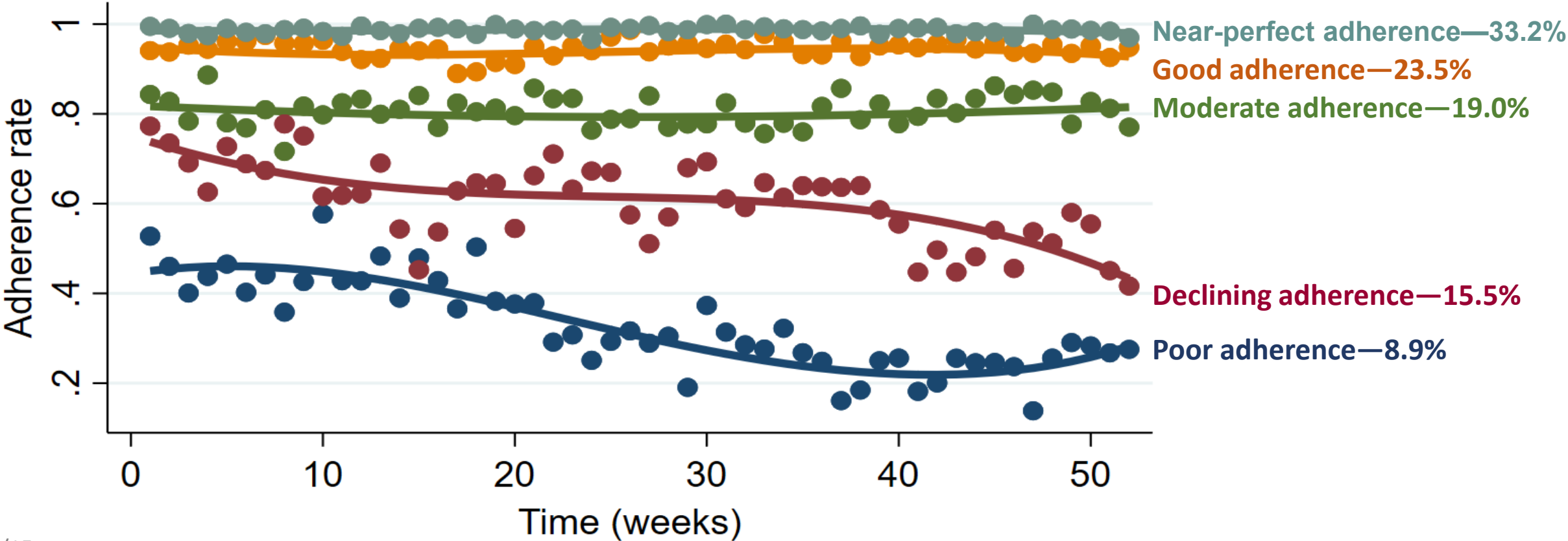
- In glaucoma, hypotensive eyedrops that lower pressure inside the eye are a preferred treatment modality for many patients.
- Higher medication adherence—the degree to which prescribed and actual medication use coincide—is associated with slower glaucoma progression (Newman-Casey et al., 2020).
- Several distinct patterns of adherence have been observed through analysis of pharmacy claims data. (Newman-Casey et al., 2015).
- **Identify and characterize patterns of medication adherence in patients with electronically monitored adherence data.**

## Identify and Characterize Patterns of Medication Adherence

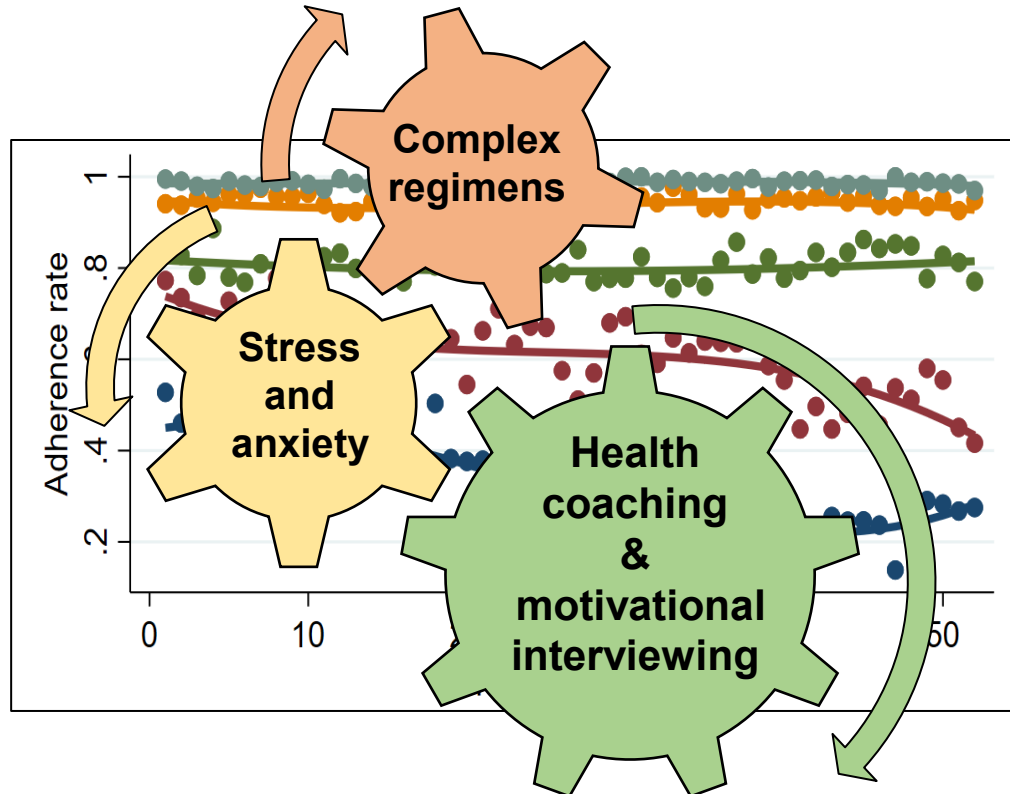
(Group-Based Trajectory Modeling)



### Identified Patterns of Medication Adherence



## Characterizing Adherence Groups



Compared to patients with Poor adherence:

- **Near-Perfect adherence, Good adherence**  
Non-Black race, milder visual field damage
- **Moderate adherence**  
Non-Black race, higher education level  
*What is the true impact of race?*
- **Declining adherence**  
More comorbidities, complex medication regimen

## Conclusion

How can we achieve equity in eye health given the diverse and evolving needs of the population?

- ✓ Recognize differences in backgrounds, needs and barriers
- ✓ Incorporate these unique needs into clinical research and eyecare delivery

Patients are the greatest untapped resource in healthcare (Bolz-Johnson et al., 2021)

Let us tap into this resource by purposefully and comprehensively addressing the social, economic, cultural, and behavioral factors that shape our changing vision.



## Support and Acknowledgements

- R01 grant EY025756  
Vision Science Research Center core grant P30EY003039
- Unrestricted grant from Research to Prevent Blindness
- University of Alabama at Birmingham School of Optometry  
Vision Science Graduate Program  
Lawrence Sincich, Ph.D.  
Lyne Racette, Ph.D., FARVO
- Prevent Blindness





# Prevent Blindness

Focus on Eye Health  
National Summit



**Our Changing Vision**